

JAWAPAN KERTAS 2 SET 2

1. $m = 0.606, p = 2.606 ; \quad m = -6.606, p = -4.606$

2. (a)

x^2	4	16	36	49	64	81
$\frac{y}{x}$	2.25	3.13	4.5	5.43	6.5	7.7

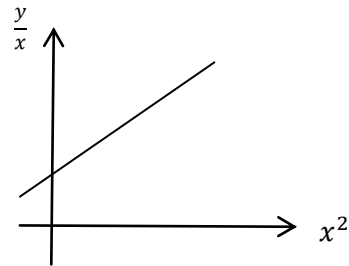
(b) Graf

(c) $\frac{y}{x} = p + qx^2$

(i) $p = 2.0$

(ii) $q = 0.07$

(iii) $y = 18.5$



3. (a) (i) 250

(ii) 107.14

(b) (i) $x = 125$

(ii) 73.84

(c) 213

4. (a) (i) $40x + 20y \leq 2000$ or $2x + y \leq 100$

(ii) $15x - 30y \geq 1200$ or $x + 2y \geq 80$

(iii) $y \leq 3x$

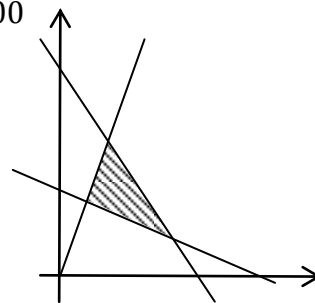
(b) Graf

(c) 35

(d) maximum point (40, 20)

Maximum profit = $20(40) + 30(20)$

= RM 1000



5. (a) (i) $y = -\frac{1}{2}x + 6$ (ii) Q(2, 5)

(b) S (8, 2)

(c) $x^2 + y^2 + 4x - 14y + 48 = 0$

6. (a) (i) $-6x + 2y$ (ii) $7x + y$

(b) $\sqrt{340} = 18.44$